



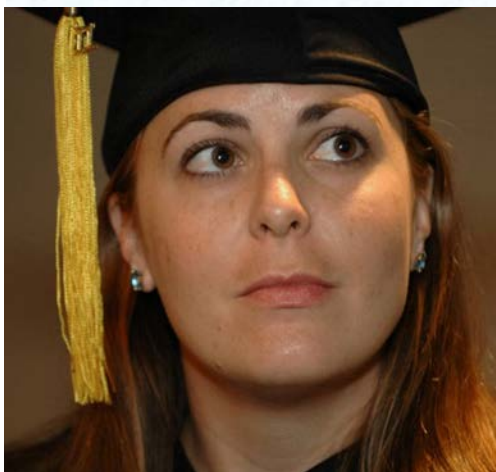
NAWEA 2013 Symposium Boulder, CO

NORTH AMERICAN WIND ENERGY ACADEMY

Session Speaker

Jenny Brecht, Renewable Energy Systems Americas Inc.

Social acceptance and permitting issues of large wind projects, a developer's perspective



Jennifer (Jenny) Brecht majored in Geological Sciences, with a minor in French, at the University of Colorado Boulder. After receiving her degree in 2001, she obtained a Certificate in Geographical Information Systems from the University of Colorado Denver. Jenny received an MS in Global Energy Management in 2011 from the University of Colorado Denver.

In 2004, Jenny began working for the Department of Interior, Assistant Secretary Indian Affairs' Division of Energy and Mineral Development (DEMD) in Lakewood, CO. During Ms. Brecht's time with DEMD, she assisted numerous tribes throughout the U.S. with assessment of their mineral and energy resources, focusing primarily on renewable energy project development on Indian lands.

In 2007, Jenny left DEMD to work for CH2M Hill in Englewood, CO. Her focus at CH2M Hill was again in renewable energy, specifically in business development of CH2M Hill's growing renewable energy technical services and EPC divisions. While at CH2M Hill, Ms. Brecht worked on numerous wind and solar energy projects, most notably the MASDAR project in Abu Dhabi.

After a year with CH2M Hill, Jenny accepted a position of Development Manager at Renewable Energy Systems Americas (RES) in Broomfield, CO. For the past four and a half years, she has enjoyed working on numerous projects throughout the U.S. While she assists fellow developers with various solar, storage and tribal development opportunities, her primary area of focus is in development of wind energy projects in the WECC region.